

# Nature's Art Scavenger Hunt

Search the sand dunes for the species below. Some are rare and special, others are abundant and frequent, while others are invasive!  
Once found, draw your own picture next to it.



## Round-leaved Sundew

I'm a tiny carnivorous plant that lives in the wet areas of the dunes.



## Bog Myrtle

I live in the wetter part of the dunes and can grow very tall. My leaves smell really nice too!



## Heath Star Moss

I am an invasive species that grows on bare sandy habitats in the dunes. Look closely and you can see my silver hairs!



Dynamic Dunescapes is a partnership project rejuvenating sand dunes across England and Wales, supported by the National Lottery Heritage Fund and the EU LIFE Programme. Partners are Natural England, Plantlife, Natural Resources Wales, National Trust and The Wildlife Trusts.

[dynamicdunescapes.co.uk](http://dynamicdunescapes.co.uk) @dynamicdunes





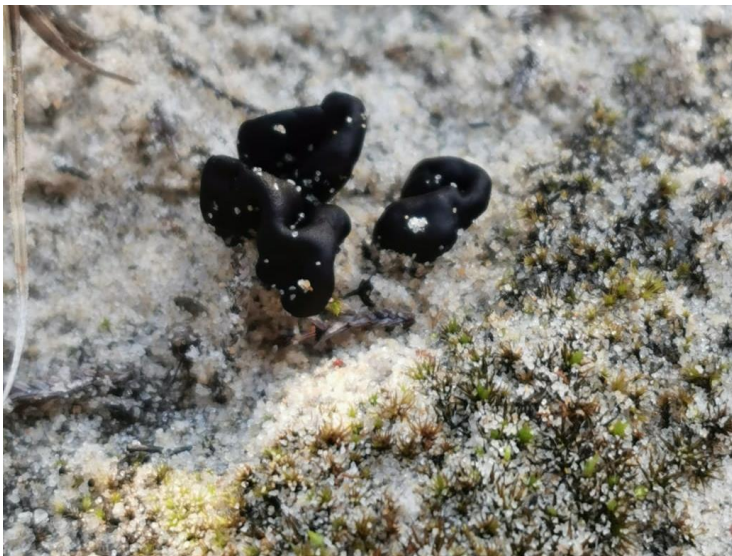
### **Marram Grass**

I am the plant species that forms sand dunes! As I grow, the sand builds around me and is held together by my long roots.



### **Pirri-Pirri Bur**

I am an invasive species that you can find on the edge of pathways up to the dunes. Be careful, sometimes I can be super sticky!



### **Earthtongue Fungi**

I am a mushroom that likes to grow in and around moss and sand! Fun fact: this is the only place in the UK where you can find me!



Dynamic Dunescapes is a partnership project rejuvenating sand dunes across England and Wales, supported by the National Lottery Heritage Fund and the EU LIFE Programme. Partners are Natural England, Plantlife, Natural Resources Wales, National Trust and The Wildlife Trusts.

[dynamicdunescapes.co.uk](http://dynamicdunescapes.co.uk) @dynamicdunes